

# Chromalox®

## Installation Instructions

### SERVICE REFERENCE

DIVISION 4	SECTION RT
SALES REFERENCE (Supersedes PJ441-6)	PJ441-7
161-511930-001	
DATE	MARCH, 2004

## RT-RES End Seal Kit for Self-Regulating (SRL) Rapid-Trace Heating Cable



5-1/2" Diameter Heat Shrink Caps

### GENERAL

The RT-RES kit is used for terminating braided (-C) and overcoated (-CR) cables in ordinary locations. Consult factory for installation of braided cable in hazardous locations. Check the kit label to ensure you have the proper kit for the cable you are installing. This kit contains enough parts to make five (5) end seals. Materials required include: sharp utility knife, standard electrical cutters, propane torch or heat gun, needle nose pliers and fiberglass tape (Chromalox FT-1 or equal).

**Note:** All electrical wiring, including GFCI (Ground Fault Circuit Interrupters), must be installed in accordance with National Electrical Code and with local codes by a qualified person.

### ⚠ WARNING

**FIRE/EXPLOSION HAZARD.** When utilizing a propane torch or heat gun in a classified (Div. 2) area, verify that the area is not hazardous at the time of installation.

### ⚠ WARNING

**ELECTRIC SHOCK HAZARD.** Disconnect all power before installing or servicing heating cable. Failure to do so could result in personal injury or property damage. Heater must be installed by a qualified person in accordance with the National Electrical Code, NFPA 70.

### INSTALLATION

### ⚠ WARNING

**ELECTRIC SHOCK HAZARD.** Any installation involving electric heating cables must be performed by a qualified person and must be effectively grounded in accordance with the National Electrical Code to eliminate shock hazard.



Figure 1



Figure 2

## INSTALLATION

### ⚠ WARNING

**ELECTRICAL HAZARD. Never connect the two parallel conductors of the heating cable together. This will result in an electrical short circuit.**

#### 3. FOR BRAIDED CABLE (-C):

Push the braid back three inches to expose the base cable jacket. Using standard electrical cutters, cut off 1-3/4 inches of the exposed base cable. See Figure 3.

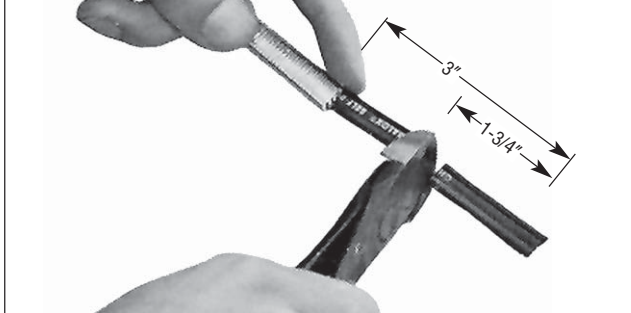


Figure 3

#### 4. FOR ALL CABLES:

Using standard electrical cutters, make a perpendicular cut across the cable 1/8" from the end. See Figure 4.



Figure 4

#### 5. FOR ALL CABLES:

Slide the heat shrink cap over the end of the cable. See Figure 5.



Figure 5

#### 6. FOR ALL CABLES:

Using a propane torch or heat gun, apply heat evenly until the cap shrinks around the cable and the adhesive melts. Both ends should remain visibly sealed when cool. If not, gently reheat. See Figure 6.

### ⚠ CAUTION

**Do not overheat the tube or cable. Keep the heat source moving at all times.**

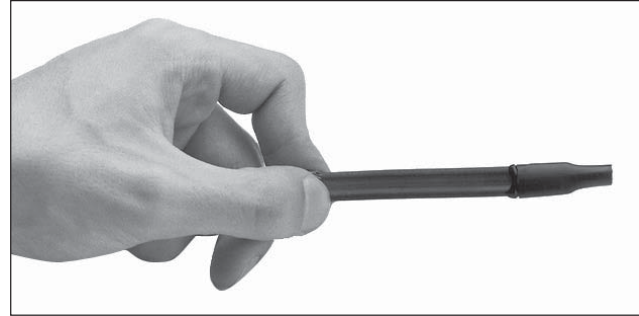


Figure 6

#### 7. FOR BRAIDED CABLE:

Pull the braid up to the cap. See Figure 7.

#### 8. FOR ALL CABLES:

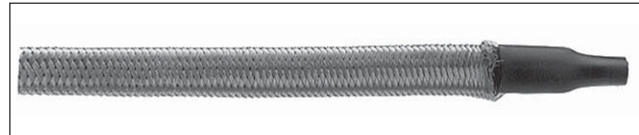


Figure 7

Secure heating cable to pipe with fiberglass tape within three inches of the end seal. See Figure 8.

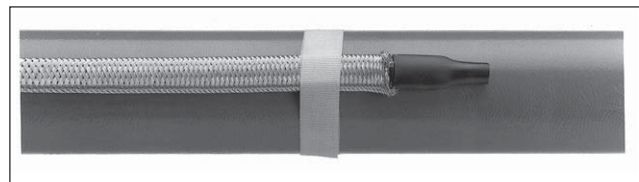


Figure 8

#### Limited Warranty:

Please refer to the Chromalox limited warranty applicable to this product at [http://www.chromalox.com/customer-service/policies/terms\\_of\\_sale.aspx](http://www.chromalox.com/customer-service/policies/terms_of_sale.aspx).

**Chromalox**<sup>®</sup>  
PRECISION HEAT AND CONTROL

1347 HEIL QUAKER BLVD., LAVERGNE, TN 37086  
Phone: (615) 793-3900 www.chromalox.com

TA - S0 - EF  
Litho in U.S.A.